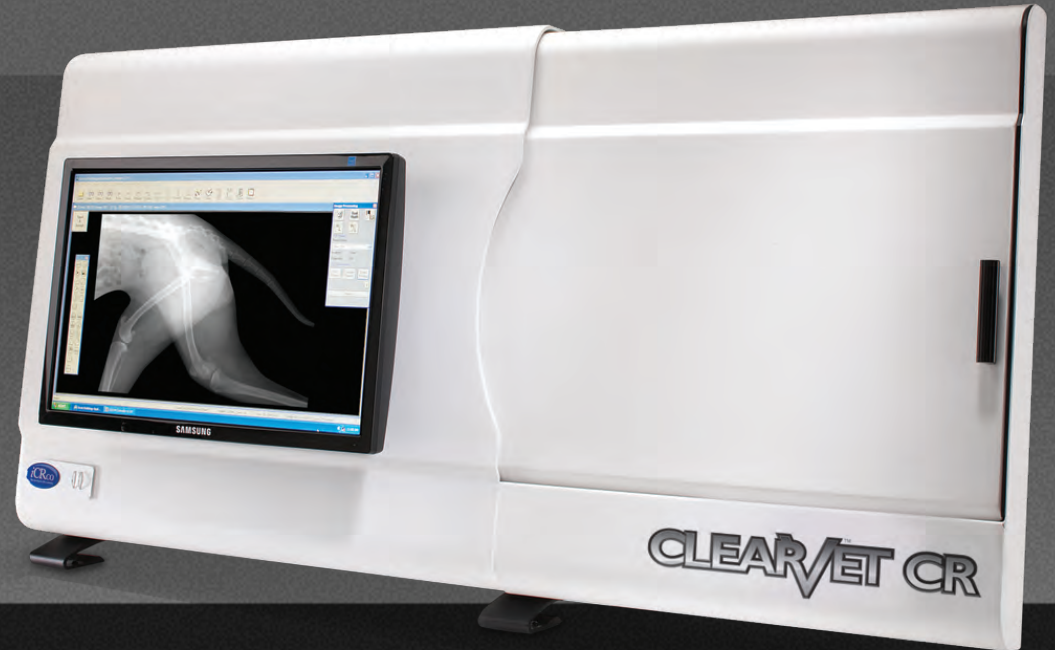


CLEARVET™



TOTAL SYSTEM ACCOUNTABILITY

The ClearVet™ CR is a wall mountable computed radiography system designed to meet the needs of all veterinary professionals. With the ClearVet™ CR, you can convert to digital with complete peace of mind knowing that your system is backed by in-house ClearVet™ hardware and software engineers. You can now say goodbye to film, chemicals and re-takes.

Once the digital images are acquired with the ClearVet™ CR, the images can be further manipulated using our superior image acquisition software. The ability to enhance the digital images with various tools improves diagnostic capability and ensures quick turnaround.

ClearVet™ is dedicated to Total System Accountability. Total System Accountability means better service and on time support when you need it. Our customers know that when you need help, you get it, no excuses, no finger pointing.

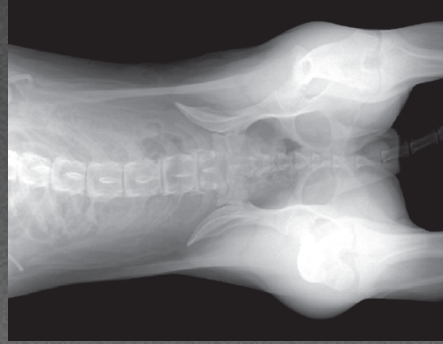
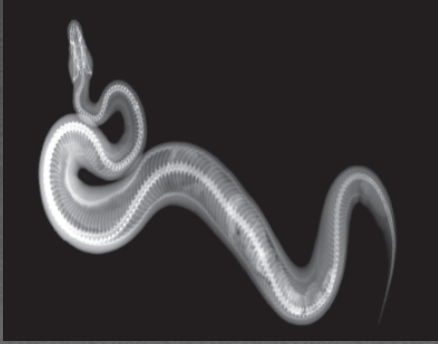
True Flat Scan Path™ technology

One Internal Moving Part

300,000+ Artifact-Free Images

www.clearvetdigital.com

CLEARVET™ CR



Although computed radiography technology has been widely accepted, other major manufacturers follow the same pattern of removing the costly phosphor plates and running them through rollers in their CR readers. The ClearVet™ CR has changed how CR technology works with our patented True Flat Scan Path™. This technology ensures the phosphor plate never leaves the cassette to avoid any plate handling, damage or wear during the scan process.

IMAGE QUALITY

- 16 bit image acquisition: 65,536 shades of greyscale
- ICE 2 processing- Image clarity enhancement

SPATIAL RESOLUTION

- 5 lp/mm

GRAYSCALE RESOLUTION

- 16 bits/pixel source file

CASSETTES AVAILABLE

- 14" x 17" (35 cm x 43 cm)
- 10" x 12" (24 cm x 30 cm)
- 8" x 10" (18 cm x 24 cm)

ACQUISITION TIME

- 25 seconds to preview
- 42 seconds image cycle

SOFTWARE FEATURES

- Image acquisition, review and evaluation
- Send and receive images in seconds
- Automatic window levelling
- Soft, standard or sharp processing
- Measurement and annotation tools
- CD/DVD Writer

DIAGNOSTIC WORKSTATION

- Dell OptiPlex, Intel Core2 Duo processor, 2GB RAM, CD/DVD Burner, 10/100 Ethernet, USB 2.0

MONITOR

- 22" viewable area, high resolution, high contrast

COMPATIBILITY

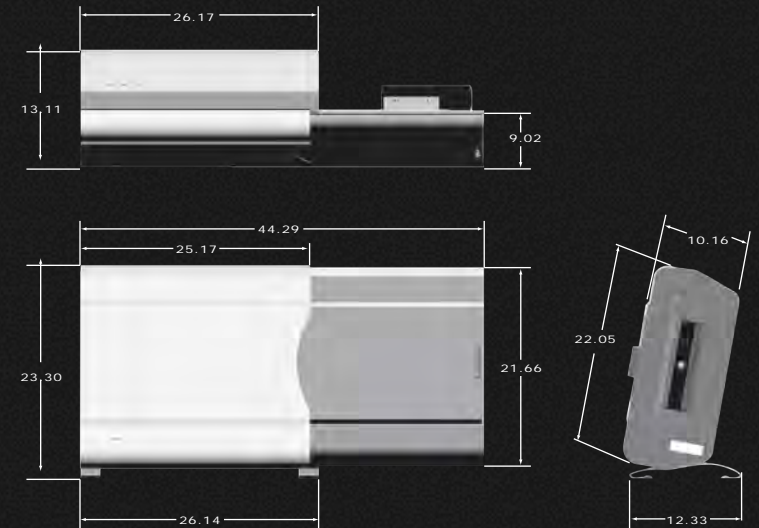
- Fully DICOM 3.0 compliant

COMMUNICATIONS

- DICOM 3.0 integration with Veterinary Practice Management Software available

STORAGE

- 250 GB Internal plus 250 GB External (Back-Up) high-capacity hard drive



Components are made from 98% recyclable parts
U.S. and International Patents Granted
Medical CE Compliant • FDA Approved • CE Mark

www.clearvetdigital.com

Authorized Distributor:

