



2011 Veterinary
Stainless Steel Catalog



Veterinary Grooming/Work Table

This NSF approved work table is constructed of heavy-duty 16 gauge 304 stainless steel and includes a welded full turndown undershelf. The legs are constructed of 1-1/2" square stainless steel tubing and have heavy-duty NSF approved adjustable stainless steel bullet feet. The undershelf surface height is 7" from the floor.

PART NUMBER:	DESCRIPTION
V3006025	Dimensions: 41"L x 30"D x 33"H (As Shown)

(Custom sizes available)



Veterinary Grooming/Prep Table

This NSF approved work table is constructed of heavy-duty 16 gauge 304 stainless steel. It includes a three-sided 6" high angled splash and a welded undershelf with a 1-1/2" high rear splash. The legs are constructed of 1-1/2" square stainless steel tubing and have heavy-duty NSF approved adjustable stainless steel bullet feet. The undershelf surface height is 7" from the floor.

PART NUMBER:	DESCRIPTION
V3006026	Dimensions: 48"L x 30"D x 36"H (As Shown)

(Custom sizes available)



Veterinary Grooming/Utility Table

This NSF approved grooming/utility stand is constructed of heavy-duty 16 gauge 304 stainless steel. The legs are constructed of 1-1/2" square stainless steel tubing and have heavy-duty NSF approved adjustable stainless steel bullet feet.

PART NUMBER:	DESCRIPTION
V3006017	Dimensions: 48"L x 30"D x 36"H (As Shown)

(Custom sizes available)

(CALL FOR PRICING)



Veterinary Grooming/Work Table

This NSF approved grooming/work table is constructed of heavy-duty 16 gauge 304 stainless steel and includes a welded undershelf. The legs are constructed of 1-1/2" square stainless steel tubing and have flanged heavy-duty NSF approved adjustable stainless steel bullet feet. The undershelf surface height is 18" from the floor.

PART NUMBER:	DESCRIPTION
V3006027	Dimensions: 48"L x 30"D x 36"H (As Shown)

(Custom sizes available)



Veterinary Mobile Pet Gurney/Supply Transport Table

This NSF approved gurney/mobile table is constructed of heavy-duty 16 gauge 304 stainless steel and includes a welded undershelf. The legs are constructed of 1-1/2" square stainless steel tubing with rolling bumpers and NSF approved heavy-duty 5" diameter swivel casters (two with locking brakes). 18" undershelf height.

PART NUMBER:	DESCRIPTION
V3006012	Dimensions: 48"L x 24"D x 36"H (As Shown)

Veterinary Mobile Pet Gurney with Marine Edge and IV Pole Insert

This NSF approved mobile pet gurney is constructed of heavy-duty 16 gauge 304 stainless steel. It includes a welded undershelf and a full wrap raised edge marine top. The legs are constructed of 1-1/2" square stainless steel tubing with rolling bumpers and heavy-duty NSF approved 5" diameter swivel casters (two with locking brakes). The full turndown undershelf's surface height is 18" from the floor. Includes a 1-7/8" diameter opening for IV pole with a securing scrow.

PART NUMBER:	DESCRIPTION
V3006033	Dimensions: 48"L x 24"D x 36"H (As Shown)
V3006013	Dimensions: 54"L x 26"D x 36"H

(CALL FOR PRICING)

All rights are expressly reserved. The contents of this document may not be revealed to anyone, nor copied in whole or in part, nor its design features used in other products without written consent.



VETERINARY STAINLESS STEEL

Tables, Stands and Gurneys



Veterinary Prep/Exam Table with Two Drawers and Undershef

This NSF approved prep/exam table is constructed of heavy-duty 16 gauge 304 stainless steel. It includes a welded full turndown undershef (surface at 8") and two self-closing drawers with stainless steel pans. The legs are constructed of 1-1/2" square stainless steel tubing and have heavy-duty NSF approved adjustable stainless steel bullet feet.

PART NUMBER:	DESCRIPTION
V3006030	Dimensions: 44"L x 26"D x 36"H (As Shown)



Veterinary Mobile Prep/Exam Table with Two Drawers and Undershef

This NSF approved mobile prep/exam table is constructed of heavy-duty 16 gauge 304 stainless steel. It includes a welded full turndown undershef (surface at 8") and two self-closing drawers with stainless steel pans. The legs are constructed of 1-1/2" diameter square stainless steel tubing and have NSF approved heavy-duty 5" diameter swivel casters (two with locking brakes).

PART NUMBER:	DESCRIPTION
V3006031	Dimensions: 44"L x 26"D x 36"H (As Shown)



Veterinary Grooming/Utility Stand

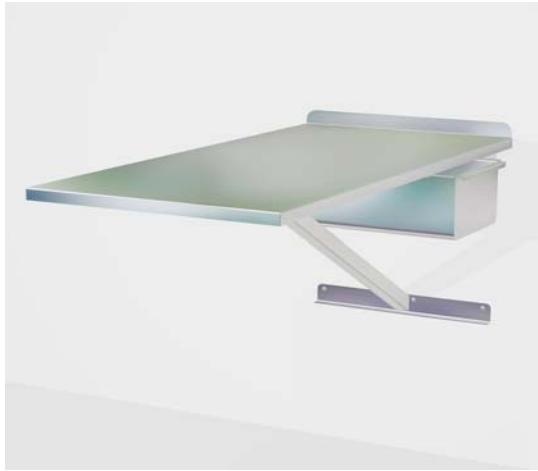
This NSF approved mobile grooming/utility stand is constructed of heavy-duty 16 gauge 304 stainless steel. It includes a welded full turndown undershef with the surface 12" from the floor. The legs are constructed of 1-1/2" square stainless steel tubing and have 5" diameter swivel casters (2 with locking brakes) for easy mobility. The top features a three-sided, 2" high stainless steel top rail.

PART NUMBER:	DESCRIPTION
V3006032	Dimensions: 20"L x 16"D x 34"H (As Shown)

(Custom sizes available)

(CALL FOR PRICING)

All rights are expressly reserved. The contents of this document may not be revealed to anyone, nor copied in whole or in part, nor its design features used in other products without written consent.

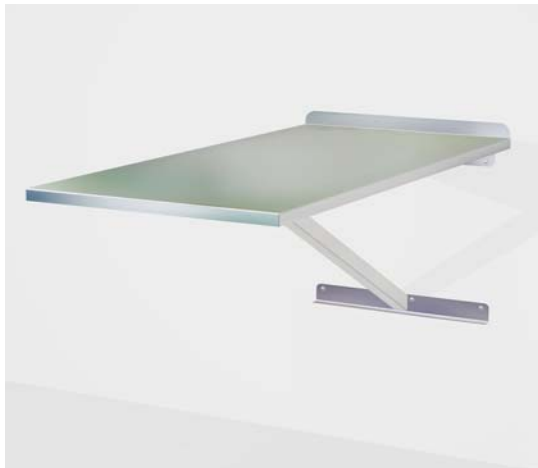


Veterinary Classic Wall Mounted Exam Table with Pass-Through Drawer

This NSF approved wall mounted exam table is constructed of heavy-duty 18 gauge 304 stainless steel and includes a slide-through drawer. The leg brace is constructed of 1-1/2" square stainless steel tubing and has heavy-duty 14 gauge stainless steel mounting brackets. This exam table includes a 2" high splash to help protect walls.

PART NUMBER:	DESCRIPTION
V3006024	Dimensions: 44"L x 21"D x 21"H (As Shown) (Mounts at any height desired.)

(Custom sizes available)



Veterinary Classic Wall Mounted Exam Table

This NSF approved wall mounted exam table is constructed of heavy-duty 18 gauge 304 stainless steel. The leg brace is constructed of 1-1/2" square stainless steel tubing and has heavy-duty 14 gauge stainless steel mounting brackets. This exam table includes a 2" high splash to help protect walls.

PART NUMBER:	DESCRIPTION
V3006037	Dimensions: 44"L x 21"D x 21"H (As Shown) (Mounts at any height desired.)

(Custom sizes available)

(CALL FOR PRICING)



All rights are expressly reserved. The contents of this document may not be revealed to anyone, nor copied in whole or in part, nor its design features used in other products without written consent.



Veterinary Classic Exam Table

This NSF approved exam table has a full wrap marine edge top to help control spills and is constructed of 18 gauge 304 stainless steel. It includes a powder coated weighted base for attractive stability. The base is constructed of 5" square tubing and heavy-duty 14 gauge 304 stainless steel and has heavy-duty adjustable feet to avoid scratching the floor while moving.

PART NUMBER:	DESCRIPTION
V3006006	Dimensions: 48"L x 22"D x 34"H (As Shown)

(Custom sizes available)

(CALL FOR PRICING)

All rights are expressly reserved. The contents of this document may not be revealed to anyone, nor copied in whole or in part, nor its design features used in other products without written consent.



Veterinary Bathing Tub with Backsplash and 45 Degree Side Splashes

This NSF approved bathing tub is constructed of heavy-duty 16 gauge 304 stainless steel. The one-piece design protects against leaks. The backsplash with a 45 degree angle helps prevent water damage to surrounding walls. Includes a tie-down rail towards the back of the splash, for securing animals. The legs are constructed of 1-1/2" square stainless steel tubing and have NSF adjustable S/S flanged bullet feet. To help prevent back strain this tub may be used with the optional Elevated Grate Insert (Shown on page 8.)

PART NUMBER:	DESCRIPTION
V3006000	Dimensions: 48"L x 26"D x 54"H (Shown)
V3006001	Dimensions: 36"L x 26"D x 54"H

***** Does not include plumbing *****



Veterinary 48" Step-In Bathing Tub

This NSF approved bathing tub is constructed of heavy-duty 16 gauge 304 stainless steel. The entire assembly is 48" long by 26" wide by 54" high. The tub is 10" off the floor, 6" deep at the front, with a full turndown edge. The one-piece design protects against leaks. Tall, full wraparound splash provides maximum protection to walls. The legs are constructed of 1-1/2" square stainless steel tubing and have flanged heavy-duty NSF approved stainless steel adjustable bullet feet. Includes three tie down eye rings for securing animals. Drain located at center middle. To help prevent back strain this tub may be used with the optional Elevated Grate Insert (Shown on page 8.)

PART NUMBER:	DESCRIPTION
V3006004	Dimensions: 48"L x 26"D x 54"H (As Shown)

***** Does not include plumbing *****

(CALL FOR PRICING)

SEE OUR PLUMBING SECTION FOR FAUCETS, SPRAYERS AND DRAIN OPTIONS!

All rights are expressly reserved. The contents of this document may not be revealed to anyone, nor copied in whole or in part, nor its design features used in other products without written consent.



VETERINARY STAINLESS STEEL

Bathing Tubs and Accessories



Economy Grooming/Bathing Tub

Constructed of heavy-duty 16 gauge 304 stainless steel. NSF approved. One piece freestanding tub and backsplash with side-mounted stands. The height is 29" at the pet access side with a backsplash height of 37-1/2" at the rear. The tub is 15" deep. Includes two tie-down rings on rear splash for securing animals. Specify plumbing side when ordering. May be used with the optional Elevated Grate Insert (Shown on page 8.)

PART NUMBER:	DESCRIPTION
V3006011	Dimensions: 48"L x 24"D x 38"H (As Shown)
V3006042	Dimensions: 58"L x 24"D x 38"H



Economy Grooming/Bathing Tub with Removable Step-Up Ramp

Constructed of heavy-duty 16 gauge 304 stainless steel. NSF approved. One piece freestanding tub and backsplash with side-mounted stands. The height is 29" at the pet access side with a backsplash height of 37-1/2" at the rear. The tub is 15" deep. Includes two tie-down rings on rear splash for securing animals. Specify plumbing side when ordering. This will also determine ramp side (Plumbing is opposite from ramp). Slide-in walk-through door option sold separately. (See below) May be used with the optional Elevated Grate Insert (Shown on page 8.)

PART NUMBER:	DESCRIPTION
V3006003	Dimensions: 48"L x 24"D x 38"H (As Shown)
V3006041	Dimensions: 58"L x 24"D x 38"H

Options:

PART NUMBER:	DESCRIPTION
V3006043	Slide-in 13" x 10" door for walk through
V3006044	Stainless steel clip-on bottle/shampoo holder



(CALL FOR PRICING)

SEE OUR PLUMBING SECTION FOR FAUCETS, SPRAYERS AND DRAIN OPTIONS!

All rights are expressly reserved. The contents of this document may not be revealed to anyone, nor copied in whole or in part, nor its design features used in other products without written consent.



Veterinary Bathing Tub with Backsplash and Angled Side Splashes

This NSF approved bathing tub is constructed of heavy-duty 16 gauge 304 stainless steel. The one-piece design protects against leaks. The wraparound angled backsplash helps prevent water damage to surrounding walls. Includes two tie-down eye loops on the back splash for securing animals and a sprayer hanging bracket.

The legs are constructed of 1-1/2" square stainless steel tubing and have NSF approved adjustable S/S flanged bullet feet. When ordering specify plumbing on right or left. (Ramp on opposite side from faucet.) Includes a walk-up ramp which swings beneath the tub.

May be used with the optional Elevated Grate Insert (Shown below.)

PART NUMBER:	DESCRIPTION
V3006002	Dimensions: 48"L x 21"D x 57"H (As shown)

***** Does not include plumbing *****



Optional Elevated Grate Insert

Constructed of heavy-duty 16 gauge 304 stainless steel. This elevated grate is NSF approved. Frame and legs are 1" square stainless steel tubing with plastic feet to prevent scratching tub. Eliminates back stress from bending over smaller animals.

PART NUMBER:	DESCRIPTION
V3006015	Dimensions: 23"L x 20"D x 10"H (As Shown)

(CALL FOR PRICING)

SEE OUR PLUMBING SECTION FOR FAUCETS, SPRAYERS AND DRAIN OPTIONS!

All rights are expressly reserved. The contents of this document may not be revealed to anyone, nor copied in whole or in part, nor its design features used in other products without written consent.



Premium Bathing Tub with Backsplash and Angled Side Splashes

This NSF approved bathing tub is constructed of heavy-duty 16 gauge 304 stainless steel. The one-piece design protects against leaks. The wraparound angled backsplash helps prevent water damage to surrounding walls. Includes four tie-down eye loops on the back splash for securing animals and a sprayer hanging bracket. The legs are constructed of 1-1/2" square stainless steel tubing and have NSF approved adjustable S/S flanged bullet feet. When ordering please specify plumbing on right or left. (Ramp on opposite side from faucet.) May be used with the optional Elevated Grate Insert (Shown on page 8.) Includes compactable mobile step-up ramp for ease of movement. Accommodates animals up to 300 lbs.

PART NUMBER:	DESCRIPTION
--------------	-------------

CALL US!	Dimensions: 60"L x 27"D x 57"H (Shown)
-----------------	--

CALL US!	Dimensions: 48"L x 27"D x 57"H
-----------------	--------------------------------

***** Does not include plumbing *****

(CALL FOR PRICING)



SEE OUR PLUMBING SECTION FOR FAUCETS, SPRAYERS AND DRAIN OPTIONS!

All rights are expressly reserved. The contents of this document may not be revealed to anyone, nor copied in whole or in part, nor its design features used in other products without written consent.



Millwork Cabinet Style Wet Table with Knee Space

The 6" deep wet table liner constructed of 16 gauge 304 stainless steel. Features three large, full extension drawers and storage cabinet. Hinges are hidden Euro style. Handles are NSF approved plastic. Standard color: Almond. Other finishes available. NSF approved. Available with knee space right or left. (Specify when ordering.)

PART NUMBER:	DESCRIPTION
VEWETL60	Dimensions: 60"L x 24"D x 36"H (As Shown)
VEWETL48	Dimensions: 48"L x 24"D x 36"H

***** Does not include plumbing *****

Options include:

Faucet or Pre-rinse Sprayer, Solid S/S Insert, Hair Trap.



Millwork Cabinet Style Examination Table with Knee Space

The marine edge top is constructed of 16 gauge 304 stainless steel. Also available with laminated flush top. Dimensions: 22"D x 36"H. Features four large, full extension drawers and storage cabinet. Hinges are hidden Euro style. Handles are NSF approved plastic. Standard color: Almond. Other finishes available. NSF approved. Also available with two cabinet doors (no drawers) or available with knee space at the right or left side. (Specify when ordering.)

PART NUMBER:	DESCRIPTION
VE4ETS58	With marine edge top: Dimensions: 58"L x 22"D x 36"H (As Shown)
VE4ETS44	With marine edge top: Dimensions: 44"L x 22"D x 36"H

PART NUMBER:	DESCRIPTION
VE4ETL58	With laminated flush top: Dimensions: 58"L x 22"D x 36"H (As Shown)
VE4ETL44	With laminated flush top: Dimensions: 44"L x 22"D x 36"H

(CALL FOR PRICING)

All rights are expressly reserved. The contents of this document may not be revealed to anyone, nor copied in whole or in part, nor its design features used in other products without written consent.



Millwork Cabinet Style Examination Table

The marine edge top is constructed of 16 gauge 304 stainless steel. Also available with laminated flush top. The work surface is 36" high. Features three large, full extension drawers and storage cabinet. Hinges are hidden Euro style. Handles are NSF approved plastic. Standard color: Almond. Other finishes available. NSF approved. Also available with two cabinet doors (no drawers).

PART NUMBER:	DESCRIPTION
VE3ETS44	With marine edge top: Dimensions: 44"L x 22"D x 36"H (As Shown)
VE3ETS58	With marine edge top: Dimensions: 58"L x 22"D x 36"H
PART NUMBER:	DESCRIPTION
VE3ETL44	With laminated flush top: Dimensions: 44"L x 22"D x 36"H
VE3ETL58	With laminated flush top: Dimensions: 58"L x 22"D x 36"H

(CALL FOR PRICING)

Need any stainless steel fabricated items not shown in this brochure?

Call or E-Mail us for a Quote on any stainless steel veterinarian or pet grooming work tables, grooming tubs, instrument tables, sinks, wet tables, work carts, mobile pet gurneys, supply tables, surgical scrub sinks, prep tables and so much more.

Our in-house Engineering and Design Department can address all of your custom needs. We have thirty-plus years of stainless steel design and fabrication experience.



Our standard and custom equipment items are built using all NSF approved materials. All of our fabricated equipment is NSF approved unless otherwise specified, as dictated by the compliance of the individual design to NSF requirements. Some custom designs presented to us for fabrication may not be NSF compliant. Consult with us about your custom designs, we can adjust them into compliance.



All rights are expressly reserved. The contents of this document may not be revealed to an nor copied in whole or in part, nor its design features used in other products without written c



VETERINARY STAINLESS STEEL

Wet Tables, Sinks and Accessories



Bi-Level Stainless Steel Wet Table

This wet table is constructed of heavy-duty 16 gauge 304 stainless steel. The liner is 15" deep at the faucet side and 6" deep at the knee space, with overall dimensions of 60"L x 24"D x 34"H. The legs and cross-bracing are constructed of 1-1/2" square stainless steel tubing and have heavy-duty NSF approved stainless steel flanged adjustable bullet feet. The crossbracing is 8" off the floor. The drain is located at the center, near the faucet. Includes S/S prep rack. NSF approved.

PART NUMBER:	DESCRIPTION
V3006036	Dimensions: 60"L x 24"D x 34"H (As shown)

***** Does not include plumbing *****

Options include:

Faucet or Pre-rinse Sprayer, Solid S/S Insert, Hair Trap.



Stainless Steel Bi-Level Wet Table Liner

Constructed of heavy-duty 16 gauge 304 stainless steel. NSF approved. This wet table drop-in liner is 6" deep at the knee space and 15" deep at the faucet side with overall dimensions of 60"L x 24"D x 15"H. The drain is located at the center, near the faucet. Includes S/S prep rack.

PART NUMBER:	DESCRIPTION
V3006038	Dimensions: 60"L x 24"D x 15"H (As Shown)
V3006039	Dimensions: 48"L x 24"D x 15"H

***** Does not include plumbing *****

Options include:

Faucet or Pre-rinse Sprayer, Solid S/S Insert, Hair Trap.



Solid Stainless Steel Insert

Constructed of heavy-duty 16 gauge 304 stainless steel. NSF approved.

PART NUMBER:	DESCRIPTION
V3006034	Dimensions: 48"L x 21-7/8"D x 1/2"H (As Shown) For use with 60" Wet Tables
V3006035	Dimensions: 38"L x 21-7/8"D x 1/2"H For use with 48" Wet Tables

(CALL FOR PRICING)

SEE OUR PLUMBING SECTION FOR FAUCETS, SPRAYERS AND DRAIN OPTIONS!

All rights are expressly reserved. The contents of this document may not be revealed to anyone, nor copied in whole or in part, nor its design features used in other products without written consent.



VETERINARY STAINLESS STEEL

Wet Tables, Sinks and Accessories



Stainless Steel 6" Deep Wet Table Liner

Constructed of heavy-duty 16 gauge 304 stainless steel. This wet table is 6" deep. Overall dimensions: 60"L x 24"D x 6"H. The drain is located at the center, near the faucet. Includes S/S prep rack. NSF approved.

PART NUMBER:	DESCRIPTION
V3006022	Dimensions: 60"L x 24"D x 6"H (As Shown)
V3006020	Dimensions: 48"L x 24"D x 6"H

***** Does not include plumbing *****

Options include:
Faucet or Pre-rinse Sprayer, Solid S/S Insert, Hair Trap.



Stainless Steel 15" Deep Wet Table Liner

Constructed of heavy-duty 16 gauge 304 stainless steel. This wet table is 15" deep. Overall dimensions: 60"L x 24"D x 15"H. The drain is located at the center, near the faucet. Includes S/S prep rack. NSF approved.

PART NUMBER:	DESCRIPTION
V3006023	Dimensions: 60"L x 24"D x 15"H (As Shown)
V3006021	Dimensions: 48"L x 24"D x 15"H

***** Does not include plumbing *****

Options include:
Faucet or Pre-rinse Sprayer, Solid S/S Insert, Hair Trap.

(CALL FOR PRICING)

SEE OUR PLUMBING SECTION FOR FAUCETS, SPRAYERS AND DRAIN OPTIONS!

All rights are expressly reserved. The contents of this document may not be revealed to anyone, nor copied in whole or in part, nor its design features used in other products without written consent.



VETERINARY STAINLESS STEEL

Wet Tables, Sinks and Accessories



All Stainless Steel Cabinet Style Wet Table with Knee Space

Constructed of heavy-duty 16 gauge 304 stainless steel. NSF approved. The wet table insert is 6" deep and includes S/S prep rack. Features hinged cabinet door and three self-closing drawers with stainless steel pans. Also available with two cabinet doors in lieu of drawers. The drain is located at the center, by the faucet.

PART NUMBER:	DESCRIPTION
V3006019	With one cabinet door and three drawers Dimensions: 60"L x 24"D x 36"H (As shown)
V3006018	With two cabinet doors (no drawers) Dimensions: 60"L x 24"D x 36"H

***** Does not include plumbing *****

Options include:

Faucet or Pre-rinse Sprayer, Solid S/S Insert, Hair Trap.



Stainless Steel Kennel Prep Area Table with Sink, Backsplash and Undershef.

Constructed of heavy-duty 16 gauge 304 stainless steel. The raised marine edge contains water and spills on the table top allowing liquids to drain back into the sink eliminating frequent cleanup of the floor. Overall dimensions are 72"L x 28"D x 40"H including the backsplash. Table surface is 36" off the floor. The welded undershef is 48"L x 24"D with the top surface 8" off the floor and includes a 1" backsplash. The sink bowl is 18"L x 20"D x 10"H. (Specify left or right mounting.) The legs are constructed of 1-1/2" square stainless steel tubing and have adjustable flanged bullet feet. NSF approved. Easy clean stainless steel withstands water and will last a lifetime.

PART NUMBER:	DESCRIPTION
V3006016	Dimensions: 72"L x 28"D x 40"H (As shown)

***** Does not include plumbing *****

(CALL FOR PRICING)

SEE OUR PLUMBING SECTION FOR FAUCETS, SPRAYERS AND DRAIN OPTIONS!

All rights are expressly reserved. The contents of this document may not be revealed to anyone, nor copied in whole or in part, nor its design features used in other products without written consent.



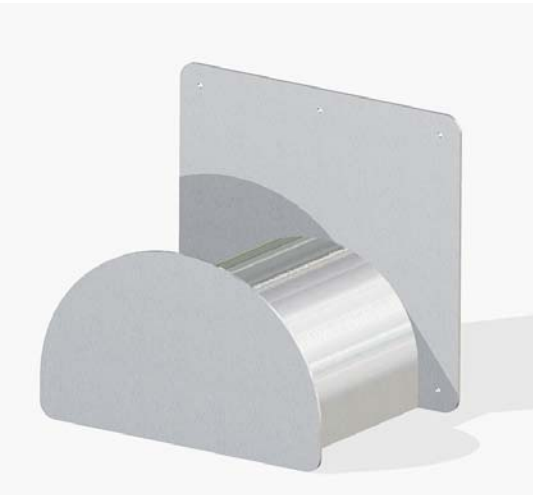
Stainless Steel Veterinary/Groomer's Utility/Rinse Sink with 24" Drainboard

Constructed of heavy-duty 16 gauge 304 stainless steel. NSF approved. No-leak one-piece folded edge sink, drainboard and 6" backsplash. Sink size: 18"L x 24"D x 11"H. Edge height: 37". Drainboard height: 34". The legs are constructed of 1-1/2" square stainless steel tubing and have NSF approved heavy-duty stainless steel adjustable bullet feet.

PART NUMBER:	DESCRIPTION
V3006029	Dimensions: 46-1/4"L x 30"D x 43"H (As shown)

***** Does not include plumbing *****

Options include: Flanged feet, Faucet or Pre-rinse Sprayer, (with or without faucet), Hair Trap. Reverse model available.



Stainless Steel Deluxe Heavy Duty Hose Hanging Bracket

Constructed of extra-heavy-duty 14 gauge 304 stainless steel for durability and years of service. Helps keep your kennel area looking neat and tidy and prevents accidents by allowing hoses to be wrapped up and kept out of the way when not in use! Will never rust! NSF approved.

PART NUMBER:	DESCRIPTION
V3006028	Dimensions: 14"L x 7"D x 14"H (As shown)

(CALL FOR PRICING)



SEE OUR PLUMBING SECTION FOR FAUCETS, SPRAYERS AND DRAIN OPTIONS!

All rights are expressly reserved. The contents of this document may not be revealed to anyone, nor copied in whole or in part, nor its design features used in other products without written consent.



Veterinary Stainless Steel Single Wide Surgeon Scrub Sink

Constructed of heavy-duty 16 gauge 304 stainless steel. NSF approved. Available as a wall-mounted version (includes mounting brackets) or as a countertop (drop-in) version. (Requires use of deck-mount faucet)
Sink bowl dimensions: 25"L x 20"D x 16-1/2"H

PART NUMBER:	DESCRIPTION
V3006010	Wall-Mount Model with 6" backsplash (Shown) Dimensions: 28"L x 23-1/2"D x 22-1/2"H
V3006008	Countertop Drop-In Model (no backsplash) Dimensions: 28"L x 26"D x 16-1/2"H

***** Does not include plumbing (See options below.) *****



Veterinary Stainless Steel Double Wide Surgeon Scrub Sink

Constructed of heavy-duty 16 gauge 304 stainless steel. NSF approved. Available as a wall-mounted version (includes mounting brackets) or as a countertop (drop-in) version. (Requires use of deck-mount faucet)
Sink bowl dimensions: 45"L x 20"D x 16-1/2"H

PART NUMBER:	DESCRIPTION
V3006009	Wall-Mount Model with 6" backsplash (Shown) Dimensions: 48"L x 23-1/2"D x 22-1/2"H
V3006007	Countertop Drop-In Model (no backsplash) Dimensions: 48"L x 26"D x 16-1/2"H

***** Does not include plumbing (See options below.) *****

Faucet Options:

Infrared sensor gooseneck faucet:	VTPL0028 (K16-4000-MV)	
Wing handled gooseneck faucet:	VTPL0023 (KN54-8002-RE4)	
Gooseneck faucet with foot valve:	VTPL0024 (KN72-9002) Faucet	VTPL0025 (K25-1000) Foot valve
Gooseneck faucet with knee valve:	VTPL0024 (KN72-9002) Faucet	VTPL0026 (B-0475) Knee valve

Note: For **VTPL0026** the knee valve wall support bracket **VTPL0027** (B-0437) is sold separately.

(CALL FOR PRICING)

SEE OUR PLUMBING SECTION FOR FAUCETS, SPRAYERS AND DRAIN OPTIONS!

All rights are expressly reserved. The contents of this document may not be revealed to anyone, nor copied in whole or in part, nor its design features used in other products without written consent.



Complete Veterinary Plumbing Kit for Grooming/Bathing Tubs

A complete plumbing kit which may be used for all QualServ stainless steel grooming/bathing tubs. Has everything you'll need for your plumbing installation. (Economy Kit.) This kit includes:

- Chrome faucet with 4" centers
- Water conserving sprayer head
- 3/8" coiled hose
- 1-1/2" diameter PVC trap with three wing nuts
- 3-1/2" diameter chrome drain with "Spin-n-Lock" technology
- Stainless steel hanging holder for sprayer head

The spray head has a hold-down lever and shuts off completely when not in use. "Spin-n-Lock" hair strainer traps fur for easy removal.

PART NUMBER:	DESCRIPTION
VTPL0001	Complete kit as shown

Wall-Mounted Pre-Rinse Sprayer with 96" Long S/S Covered Hose and 38" Riser

Premium quality institutional specification grade chrome plated brass pre-rinse faucet with sprayer head. Handles and grips are provided with SANIGUARD® treatment. NSF 61/9 Annex G certified.

Features:

- KN53-Y001 - 8" (203mm) center wall mounted faucet
- KN50-X153-38 - 38" (965.2mm) riser
- K50-Y020 - 12" (304.8mm) wall bracket
- KN50-Y030 - Angled sprayer or KN50-Y002 - Straight sprayer
- KL50-Y010-96 - 96" flexible stainless steel protected hose
- 1/2" NPT female eccentric flanged inlets (00AA)
- EPA act 2005 Compliant

PART NUMBER:	DESCRIPTION
VTPL0002	With Wrist Action Handles/Angled Sprayer CHG KN53-2096-BR4 (Shown)
VTPL0003	With Wrist Action Handles/Straight Sprayer CHG KN53-1096-BR4
VTPL0004	With Lever Action Handles/Angled Sprayer CHG KN53-2096-BR1
VTPL0005	With Lever Action Handles/Straight Sprayer CHG KN53-1096-BR1



Image courtesy of Component Hardware Group ©

(CALL FOR PRICING)

All rights are expressly reserved. The contents of this document may not be revealed to anyone, nor copied in whole or in part, nor its design features used in other products without written consent.



Image courtesy of Component Hardware Group ©

Wall-Mounted Sprayer with Add-On 6" Swivel Nozzle Faucet and 32" Riser

Premium quality institutional specification grade chrome plated brass pre-rinse faucet with sprayer head. Handles and grips are provided with SANIGUARD® treatment. NSF 61/9 Annex G certified.

Features:

- KN53-Y001 - 8" (203mm) center wall-mounted faucet
- KN50-X153-32 - 32" (812.9mm) riser
- K50-Y020 - 12" (304.8mm) wall bracket
- KN50-Y030 - Angled sprayer or KN50-Y002 - Straight sprayer
- KL50-Y010-96 - 96" flexible stainless steel protected hose
- 1/2" NPT female eccentric flanged inlets (00AA)
- EPA act 2005 Compliant

PART NUMBER:	DESCRIPTION
VTPL0006	With Wrist Action Handles/Angled Sprayer CHG KN53-2096-A14 (Shown)
VTPL0007	With Wrist Action Handles/Straight Sprayer CHG KN53-1096-A14
VTPL0008	With Lever Action Handles/Angled Sprayer CHG KN53-2096-A11
VTPL0009	With Lever Action Handles/Straight Sprayer CHG KN53-1096-A11

(CALL FOR PRICING)

Images of Component Hardware Group plumbing components are used herein by permission. Component Hardware Group retains all rights to the use of these images and to their trademarks/logos.



**COMPONENT
HARDWARE™**



All rights are expressly reserved. The contents of this document may not be revealed to anyone, nor copied in whole or in part, nor its design features used in other products without written consent.



Image courtesy of Component Hardware Group ©

Wall-Mount Faucet with Swivel Elbow Adaptor & Add-On Faucet with 12" Swivel Spout

(Side Splash Panel Mounting)

Add-on faucet has extra large 12" long swivel spout that moves out of the way for convenience. Double handles control the temperature to the sprayer for the task at hand. The swivel faucet has a single lever handle for convenient one hand operation. NSF 61/9 Annex G certified. Includes sprayer support bracket to keep sprayer head out of the way when not in use. With stainless steel protected 72" long hose.

PART NUMBER:	DESCRIPTION
VTPL0010	With Wrist Action Handles/Angled Sprayer CHG KN53-2072-A44 (Shown)
VTPL0011	With Wrist Action Handles/Straight Sprayer CHG KN53-1072-A44
VTPL0012	With Lever Action Handles/Angled Sprayer CHG KN53-2072-A41
VTPL0013	With Lever Action Handles/Straight Sprayer CHG KN53-1072-A41



Image courtesy of Component Hardware Group ©

Wall-Mount Faucet with Swivel Elbow Adaptor & Add-On Faucet with 12" Swivel Spout

(Back Splash Panel Mounting)

Add-on faucet has extra large 12" long swivel spout that moves out of the way for convenience. Double handles control the temperature to the sprayer for the task at hand. The swivel faucet has a single lever handle for convenient one hand operation. NSF 61/9 Annex G certified. Includes sprayer support bracket to keep sprayer head out of the way when not in use. With stainless steel protected 44" long hose.

PART NUMBER:	DESCRIPTION
VTPL0014	With Wrist Action Handles/Angled Sprayer CHG KN53-2044-A44 (Shown)
VTPL0015	With Wrist Action Handles/Straight Sprayer CHG KN53-1044-A44
VTPL0016	With Lever Action Handles/Angled Sprayer CHG KN53-2044-A41
VTPL0017	With Lever Action Handles/Straight Sprayer CHG KN53-1044-A41

(CALL FOR PRICING)

All rights are expressly reserved. The contents of this document may not be revealed to anyone, nor copied in whole or in part, nor its design features used in other products without written consent.



Image courtesy of Component Hardware Group ©

Deck-Mounted Faucet with 5-1/2" Swivel Gooseneck Spout and Pre-Rinse Sprayer

This heavy-duty NSF approved Faucet has a swivel gooseneck spout with a 5-1/2" spread, 9-1/2" high, providing excellent clearance and allowing the spout to be easily moved out of the way. The plumbing connections are on 8" centers. Includes 96" long stainless steel protected hose. Works great on wet tables!

PART NUMBER:	DESCRIPTION
VTPL0018	With Wrist Action Handles/Angled Sprayer CHG KN41-8302-964A (Shown)
VTPL0019	With Wrist Action Handles/Straight Sprayer CHG KN41-8302-964S
VTPL0020	With Lever Action Handles/Angled Sprayer CHG KN41-8302-961A
VTPL0021	With Lever Action Handles/Straight Sprayer CHG KN41-8302-961S



Image courtesy of Component Hardware Group ©

Deluxe Wall-Mounted Faucet with Sprayer Head and Swing Nozzle

This NSF approved Faucet has an angled pre-rinse sprayer and a 9-1/2" swivel spout. The plumbing connections are on 8" centers. Includes 72" long stainless steel protected hose.

PART NUMBER:	DESCRIPTION
VTPL0022	Faucet with sprayer - As shown CHG KN53-2000-509

(CALL FOR PRICING)

SELECT YOUR FAUCET HANDLE STYLE CORRECTLY



K50-0001 - WRIST ACTION HANDLES



K50-0110 - LEVER ACTION HANDLES

All rights are expressly reserved. The contents of this document may not be revealed to anyone, nor copied in whole or in part, nor its design features used in other products without written consent.



Wall-Mount Faucet with 10" Swivel Spout

- Ideal for high use sinks
- Wall-mount
- 8" centers
- 10" Swivel Spout (Optional spout lengths available)
- 1/2" pipe size
- 1/4 turn stems
- Handles are treated with PathoGuard™ anti-microbial treatment
- Inlet couplings adjust for minor pipe center variations
- Low lead construction
- NSF certified to standard 61/9
- Heavy-duty

PART NUMBER:	DESCRIPTION
OS070015	Faucet - As shown Kason 60451KN8010



Wing Handled Faucet with Rigid Gooseneck Nozzle

- 5-1/2" (140mm) spread rigid gooseneck (120X)
- 8" (203mm) centers
- Stream regulator outlet (B-LT)
- 5-1/4" (133mm) centerline to outlet
- 4" (102mm) wrist action handles (B-WH4)
- NSF certified to standard 61/9 Annex G

PART NUMBER:	DESCRIPTION
VTPL0023	Faucet - As shown CHG KN54-8002-RE4

Image courtesy of Component Hardware Group ©



(CALL FOR PRICING)



All rights are expressly reserved. The contents of this document may not be revealed to anyone, nor copied in whole or in part, nor its design features used in other products without written consent.



Image courtesy of Component Hardware Group ©

Wall-Mount Spout Base with Swivel Gooseneck Spout

NSF 61/9 Annex G faucet for use with foot or knee operated valves. The spout has an overhang of 6" and a height of 5-1/4" above the mounting flange. The overall height is 9-1/4".

- 1/2" NPT female inlet. Includes nipple, ell and mounting hardware
- 5-3/4" (146mm) spread swivel gooseneck (133X)
- 9-1/16" (230mm) to top of gooseneck
- 5-1/16" (129mm) clearance from center of inlet to stream regulator outlet (B-LT)

(Requires foot or knee valve below)

PART NUMBER:	DESCRIPTION
VTPL0024	Base and spout - As shown CHG KN72-9002



Image courtesy of Component Hardware Group ©

Foot Operated Valve for Use with Spout Bases

Dual pedal lever controlled valve assembly with self-closing valves. All chrome plated brass with a rough body and polished pedals. Bolts to floor for stability. Dimensions: 5-5/8"L x 4-7/8"D x 2-11/16"H.

- Double pedal valve hot/cold (color indexed red/blue)
- 1/2" NPT female inlets on 2-1/2" centers, 1" from floor to centers
- 1/2" NPT female outlet (center top), 2" from floor to center
- Operating temperature 40°F-140°F, operating pressure 20-125 PSI

PART NUMBER:	DESCRIPTION
VTPL0025	Dual foot valve - As shown CHG K25-1000



Knee Operated Valve for Use with Spout Bases

Knee operated valve with sensitive variable flow allows hands-free use.

- Heavy-duty cam acting stirrup
- Valve will remain in set position for hot, cold or mixed water
- 1/2" NPT female inlets, on 2-1/2" centers - 1/2" NPT female outlet

PART NUMBER:	DESCRIPTION
VTPL0026	Knee valve - As shown T&S B-0475

(Requires wall support bracket - See next page)

(CALL FOR PRICING)

All rights are expressly reserved. The contents of this document may not be revealed to anyone, nor copied in whole or in part, nor its design features used in other products without written consent.



Wall Support Bracket for Knee Valve

- All aluminum. Fastens to wall and supports body of knee action valve
 - Approx. 12" (305mm) from wall to valve body mounting holes
 - 3-1/4" of knee stirrup extends in front of 20" back to front basin
 - Can be shortened by cutting aluminum pipe
 - Available in longer lengths up to 24" as a special order
- Lead time applies for special orders. ***** Call for pricing *****

PART NUMBER:	DESCRIPTION
VTPL0027	Support Bracket - As shown T&S B-0437

(Used with Knee Operated Valve on previous page.)



Hands Free Infrared Sensor Faucet with Gooseneck Spout

Sensor activated hands free design helps prevent the spread of germs. Includes K90-X015 hot/cold temperature control mixing valve.

AC powered unit. Does not require batteries.

- Electronic wall-mount faucet saves water and energy
- Durable chrome-plated brass faucet body construction
- Commercial Specification Grade
- Operating Temperature: 40°F - 140°F
- Operating Pressure: 5 - 125 PSI
- AC/DC control module operates on standard 120V service
- 120VAC 50/60 Hz input - 7.5VDC 0.8A Class 2 UL/CSA transformer
- Waterproof control box. Vandal resistant housing and control cable
- Includes vandal resistant aerator mounted on 3" spout
- 18" hot and cold supply stop. Flexible connector hoses
- ADA compliant. CSA and cUL approved
- Power saving mode
- Sensor range adjustment
- Auto time-out adjustment
- Water shut-off delay adjustment
- Easy to install. Pre-assembled with all mounting hardware

PART NUMBER:	DESCRIPTION
VTPL0028	Hands Free Faucet - As shown CHG K16-4000-MV

(CALL FOR PRICING)

Image courtesy of Component Hardware Group ©



All rights are expressly reserved. The contents of this document may not be revealed to anyone, nor copied in whole or in part, nor its design features used in other products without written consent.



Image courtesy of Component Hardware Group ©

Atmospheric Vacuum Breaker

Anti-siphon vacuum breaker specifically designed for and made available to animal handlers. Prevents contamination of fresh drinking water supply. Approved for use where plumbing codes require it.

PART NUMBER:	DESCRIPTION
VTPL0029	Vacuum breaker with 3/8" NPT connection CHG K50-X137
VTPL0030	Vacuum breaker with 1/2" NPT connection CHG K50-X138
VTPL0031	Vacuum breaker with 1/2" NPT connection CHG K50-X138-S (Satin finish)



Image courtesy of Component Hardware Group ©



Wall-Mount Veterinary Wash/Rinse Spray Assembly

The valve body with plumbing connections on 4" centers makes this wash/rinse sprayer assembly perfect for any veterinary wash tub. Includes an atmospheric vacuum breaker to prevent back flow siphoning. Heavy-duty flexible stainless steel hose. Heavy-duty construction to withstand field abuse and pet inflicted damage. Built-in diverter valve. Vinyl-coated wall hook included. Comes in two different hose lengths.

PART NUMBER:	DESCRIPTION
VTPL0032	Spray assembly with 72" S/S Hose CHG KN45-3100-VB72
VTPL0033	Spray assembly with 96" S/S Hose CHG K50-X137

(CALL FOR PRICING)