

Edan DUS 3 VET

Veterinary Ultrasound

Perfect for General Practitioners and Specialists.

EDAN's portable digital ultrasonic imaging system produces superior image quality. With a variety of multi-frequency transducers, multi-channel image enhancement, multiple segment TGC controls and powerful post-processing, this affordable ultrasound is a favorite among veterinarians.

Powerful tools and software included.

Robust measurement and calculation software package specifically designed for canine, feline, equine, bovine and ovine is included with the system. The DUS 3 VET insures optimal images and solid diagnostic confidence for each clinical application.

Imaging



Product Highlights

- From "OFF" to scanning in seconds
- Multi-frequency transducer series (2.5MHz - 10.0MHz)
- 10" non-interlaced monitor
- Two USB ports allow storage, transferring and printing
- 56MB permanent image storage capacity
- 128-frame cine loop memory

Edan DUS 3 VET

Veterinary Ultrasound

Lightweight and Portable.

Great for small animal and large animal practitioners, in or out of the clinic.

DICOM 3.0

Send images from the DUS 3 VET to a specialist or, transfer images to your practice management software.



Imaging

Specifications

- 16 Channel system
- 4-segment TGC adjustment
- 128-frame bi-directional cine-loop memory
- One transducer port
- THI (Tissue Harmonic Imaging)
- TSI (Tissue Specific Imaging)
- Transducer frequency: 2.5MHz - 10.0MHz
- Imaging modes: B, B+B, 4B, B+M, M
- B Mode: Distance; Circumference; Area; Volume; Angle
- M Mode: Distance; Time; Velocity; Heart rate (2 cycles)
- 10" non-interlaced monitor
- Two USB ports
- Dimensions: 12"W x 14"D x 10"H

Standard Accessories:

- Micro-convex array transducer C611 (4.0/5.0/6.0/7.0/8.0 MHz)
- Reproductive software
- USB Pen Drive
- Probe holder
- Cable holder
- Operators Manual

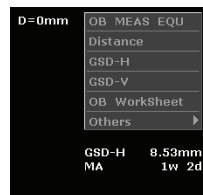
Optional Accessories:

- Other transducers:
 - Linear endorectal
 - Linear array
 - Convex array
- Sony B&W Printer
- Mobile trolley
- Storage/Transport Case
- DICOM 3.0 connectivity



Rubberized Keyboard

Fluid resistant rubberized keyboard protects your investment. Easy to clean and maintain.



Embedded Software

Obstretic, cardiac and abdominal software is pre-loaded and allows the veterinarian to perform a multitude of examinations.



Accessory Ready

Easily attach a secondary monitor, laser printer or video printer to the DUS 3 VET.

Leading Edge provides Veterinary professionals high-performance, competitively priced, reliable Veterinary medical equipment, backed by world-class support and service. Through our Green Initiative, we've made a genuine commitment to support long term environmental sustainability and we're committed to protecting and preserving the environment. As a single source Veterinary medical equipment company, Leading Edge products are available only through a limited and select group of Distributors, who share in our philosophies and standards of excellence, commitment and service.

Authorized Distributor

