

# Edan U50 VET

Veterinary Ultrasound

## Imaging

### Color Flow Doppler functionality.

The U50 VET from EDAN is a portable digital ultrasound that allows color flow doppler procedures and produces superior image quality.

### Advanced Imaging technology.

The U50 VET has a variety of multi-frequency transducers, multi-channel image enhancement, multiple segment TGC controls and powerful post-processing.

### Ergonomic design and user-friendly workflow.

Veterinarians will immediately benefit from this powerful diagnostic tool for cardiac studies. The U50 VET facilitates sharp image acquisition and increased diagnostic confidence.



## Product Highlights

- Color Flow Doppler & Pulse Wave Doppler
- Multi-frequency transducer series (2.5MHz - 11.0MHz)
- 12.1" high-resolution LCD monitor
- Two transducer ports
- 504MB image storage capacity
- 256-frame cine loop memory

# Edan U50 VET

Veterinary Ultrasound

Compact, Lightweight and Portable.

Great for small animal and large animal practitioners, in or out of the clinic. The built-in battery provides 2 hours of use.



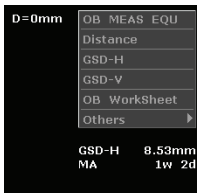
Enhanced Support.

Meets the higher diagnostic imaging requirements of veterinarians.



### Backlit Keys

Backlit keys allows for use in low light. A full QWERTY keyboard enables the user to easily enter accurate patient information.



### Embedded Veterinary-specific Software

Obstetric, cardiac and abdominal software is pre-loaded and allows the veterinarian to perform a multitude of examinations.



### Accessory Ready

Easily attach a secondary monitor, laser printer or video printer to the U50 VET.

## Imaging

### Specifications

- Color Flow Doppler, Pulse Wave Doppler, Power Doppler
- 32 Channel system
- Intelligent 8-segment TGC adjustment
- 256-frame bi-directional cine-loop memory
- Two transducer ports
- THI (Tissue Harmonic Imaging), TSI (Tissue Specific Imaging)
- Transducer frequency: 2.0MHz - 10.0MHz
- Imaging modes: B, B+B, 4B, B+M, M, PW
- B Mode: Distance; Circumference; Area; Volume; Angle
- M Mode: Distance; Time; Velocity; Heart rate (2 cycles)
- 12.1" high resolution LCD monitor
- Built-in Battery with 2 hour run-time
- Pseudo color: 7 types
- Two USB ports
- Dimensions: 13"W x 13"D x 10"H

#### Standard Accessories:

- Micro-convex array transducer C6152UB (5.5/6.5/7.5/H4.5/H4.7 MHz)
- Reproductive software
- USB Pen Drive
- Probe holder
- Lithium-ion battery
- Operators Manual

#### Optional Accessories:

- Other transducers:
  - Micro-convex x 3
  - Linear endorectal x 2
  - Linear array x 3
  - Convex array x 1
- Mobile trolley, Printer
- Storage/Transport Case
- DICOM 3.0 connectivity

Leading Edge provides Veterinary professionals high-performance, competitively priced, reliable Veterinary medical equipment, backed by world-class support and service. Through our Green Initiative, we've made a genuine commitment to support long term environmental sustainability and we're committed to protecting and preserving the environment. As a single source Veterinary medical equipment company, Leading Edge products are available only through a limited and select group of Distributors, who share in our philosophies and standards of excellence, commitment and service.

### Authorized Distributor

